

Frizzled 2 Antibody (internal region)
Peptide-affinity purified goat antibody
Catalog # AF2714a**Specification**

Frizzled 2 Antibody (internal region) - Product Information

| | |
|-------------------|--|
| Application | IHC, E |
| Primary Accession | Q14332 |
| Other Accession | NP_001457.1 , 2535 , 57265 (mouse) , 64512 (rat) |
| Reactivity | Human |
| Predicted | Mouse, Rat |
| Host | Goat |
| Clonality | Polyclonal |
| Concentration | 0.5 mg/ml |
| Isotype | IgG |
| Calculated MW | 63554 |

Frizzled 2 Antibody (internal region) - Additional Information**Gene ID** 2535**Other Names**

Frizzled-2, Fz-2, hFz2, FzE2, FZD2

Dilution

IHC~~1:100~500

E~~N/A

Format

0.5 mg/ml in Tris saline, 0.02% sodium azide, pH7.3 with 0.5% bovine serum albumin

Storage

Maintain refrigerated at 2-8°C for up to 6 months. For long term storage store at -20°C in small aliquots to prevent freeze-thaw cycles.

Precautions

Frizzled 2 Antibody (internal region) is for research use only and not for use in diagnostic or therapeutic procedures.

Frizzled 2 Antibody (internal region) - Protein Information**Name** FZD2**Function**

Receptor for Wnt proteins. Most of frizzled receptors are coupled to the beta-catenin canonical signaling pathway, which leads to the activation of disheveled proteins, inhibition of GSK-3 kinase,

nuclear accumulation of beta-catenin and activation of Wnt target genes (PubMed:25759469). A second signaling pathway involving PKC and calcium fluxes has been seen for some family members, but it is not yet clear if it represents a distinct pathway or if it can be integrated in the canonical pathway, as PKC seems to be required for Wnt-mediated inactivation of GSK-3 kinase. Both pathways seem to involve interactions with G-proteins. May be involved in transduction and intercellular transmission of polarity information during tissue morphogenesis and/or in differentiated tissues.

Cellular Location

Membrane; Multi-pass membrane protein. Cell membrane; Multi-pass membrane protein

Tissue Location

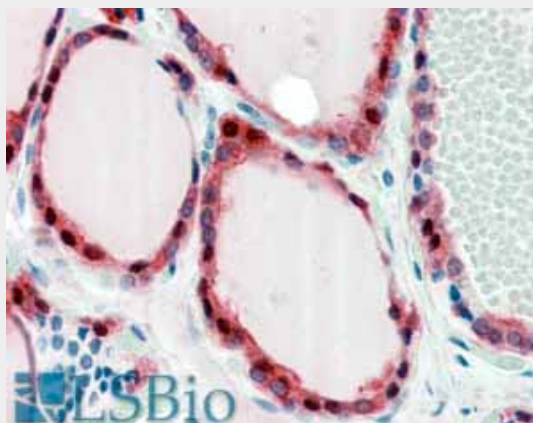
Widely expressed. In the adult, mainly found in heart, placenta, skeletal muscle, lung, kidney, pancreas, prostate, testis, ovary and colon. In the fetus, expressed in brain, lung and kidney. Low levels in fetal liver

Frizzled 2 Antibody (internal region) - Protocols

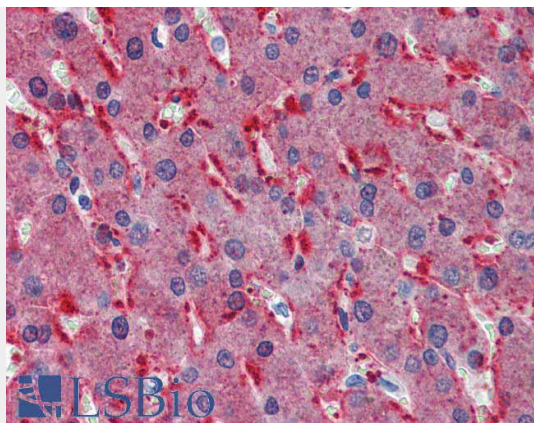
Provided below are standard protocols that you may find useful for product applications.

- [Western Blot](#)
- [Blocking Peptides](#)
- [Dot Blot](#)
- [Immunohistochemistry](#)
- [Immunofluorescence](#)
- [Immunoprecipitation](#)
- [Flow Cytometry](#)
- [Cell Culture](#)

Frizzled 2 Antibody (internal region) - Images



AF2714a (2.5 µg/ml) staining of paraffin embedded Human Thyroid Gland. Steamed antigen retrieval with citrate buffer pH 6, AP-staining.



AF2714a (2.5 µg/ml) staining of paraffin embedded Human Liver. Steamed antigen retrieval with citrate buffer pH 6, AP-staining.

Frizzled 2 Antibody (internal region) - References

Regulation of primary cilia formation and left-right patterning in zebrafish by a noncanonical Wnt signaling mediator, duboraya. Oishi I, Kawakami Y, Raya A, Callol-Massot C, Izpisua Belmonte JC. Nat Genet. 2006 Nov;38(11):1316-22. Epub 2006 Oct 1. PMID: 17013396